

Crestron **CNXRMC**
Room Solution Box

Operations Guide



This document was prepared and written by the Technical Documentation department at:



Crestron Electronics, Inc.
15 Volvo Drive
Rockleigh, NJ 07647
1-888-CRESTRON

Contents

Room Solution Box: CNXRMC	1
Introduction.....	1
Features and Functions	1
Specifications.....	2
Physical Description	2
Industry Compliance.....	6
Setup	6
Network Wiring.....	6
Identity Code	7
Mounting.....	8
Hardware Hookup.....	8
Video Input Compensation	8
Audio/Video Distribution	9
Universal Remotes.....	11
Programming Software	14
Programming with Crestron AppBuilder.....	14
Programming with SIMPL Windows	15
Uploading and Upgrading.....	20
Communication Settings.....	21
Uploading a SIMPL Windows Program	23
Firmware Upgrade	24
Problem Solving	27
Troubleshooting.....	27
Further Inquiries	28
Future Updates.....	28
Appendix: Mapping Table.....	29
Return and Warranty Policies.....	30
Merchandise Returns / Repair Service.....	30
CRESTRON Limited Warranty.....	30

Room Solution Box: CNXRMC

Introduction

Features and Functions

The Crestron® CNXRMC is a key component for distributing video throughout an entire home using standard CAT5 cabling. The CNXRMC plays an integral part of the Crestron Home®; it is the ideal companion product for the Crestron Video Distribution Switch CNX-PVID8x3 or CNX-PVID8x4 (CNX-PVID8). The unit's design allows only one output format at a time.

The unit serves as a CAT5 receiver allowing the user to choose a video source (component video, composite video, S-video, or digital audio) from the home's central rack and display the video on the connected monitor in that room.

The CNXRMC also provides four infrared (IR) ports and one RS-232 port for controlling local devices. It can control the monitor and sources via responses to infrared (IR) commands from a third party universal remote (sending RC5 code and some Sharp Electronics Corporation codes) including the Philips Pronto. However, upstreaming video (sending video to the headend) and video recording are not supported via the CNXRMC.

Functional Summary

- One RJ-45 – four channels of balanced video input; three channels with input level compensation adjustments
- Seven RCA connectors for output of composite, component, and s-video formats, plus one channel of digital audio
- RJ-11 for RS-232 communication
- Mini-Cresnet® interface
- Four infrared (IR) output ports for STIRP emitters
- One IR input jack for CNXRMRD sensor
- Front panel PWR and NET LEDs

Specifications

Detailed specifications for the CNXRMC are listed in the following table.

CNXRMC Specifications

SPECIFICATION	DETAILS
Power Requirements	6 Watts (0.25 Amp @ 24 VDC)
Default Net ID	43
Head end video inputs	RJ-45 CAT5 balanced video input (1-4), 100 ohm impedance, with cable length compensation on three of the four signals. All four inputs have video sensor capability (0.25 Vp-p)
Local video outputs	7 RCA connectors labeled A-G, 75 ohm impedance
RS-232 communication	RJ-11 connector The RS-232 port can be used for the console as well as RS-232-equipped device communication. The RS-232 port supports data rates up to 115K baud and RTS/CTS hardware handshaking.
IR input	1 Mini stereo phone jack—(power, ground, signal)
IR output	4 Mini mono phone jacks—(ground, signal)
Sensor input	Mini Cresnet 2 pin connector accepts power status feedback from the optional CNXRMC current sensor (available separately).
Indicators	PWR (Power), NET and SETUP LEDs
CNXRMC Firmware	CNXRMC.51314t.upz or later
Control System Update Files ^{1, 2, 3} 2-Series Control System CNMSX-AV/PRO CNRACKX/-DP	Version 3.015.CUZ or later Version 5.13.12X.UPZ or later Version 5.12.63W.UPZ or later
Environmental Temperature	41° to 122°F (5° to 50°C)
Humidity	10% to 90% RH (non-condensing)
Dimensions	Height: 1.94 in (4.93 cm) Width: 7.48 in (19.00 cm) Depth: 5.00 in (12.70 cm)
Weight	1.17 lb (0.53 kg)

1. The latest versions can be obtained from the Downloads | Software Updates section of the Crestron website (www.crestron.com). Refer to NOTE below.
2. Crestron 2-Series control systems include the AV2, CP2, CP2E, MP2, MP2E, PAC2, PRO2, and RACK2.
3. CNX update files are required for either CNMSX-AV/PRO or CNXRACKX/-DP. Filenames for CNX update files have a UPZ extension. To avoid program problems, make certain you are using the update file with the correct suffix letter (e.g., W or X).

NOTE: Crestron software and any files on the website are for Authorized Crestron dealers and Crestron Authorized Independent Programmers (CAIP) only. New users may be required to register to obtain access to certain areas of the site (including the FTP site).

Physical Description

The CNXRMC is housed in a black enclosure with labeling on the front and rear panels. Controls and LED indicators are located on the front panel; connections are made to the front and rear panels. (Refer to the illustrations on the next page.) The unit can be mounted in any convenient orientation. The dimensions are shown in the physical views illustration on page 4.

CNXRMC Front View

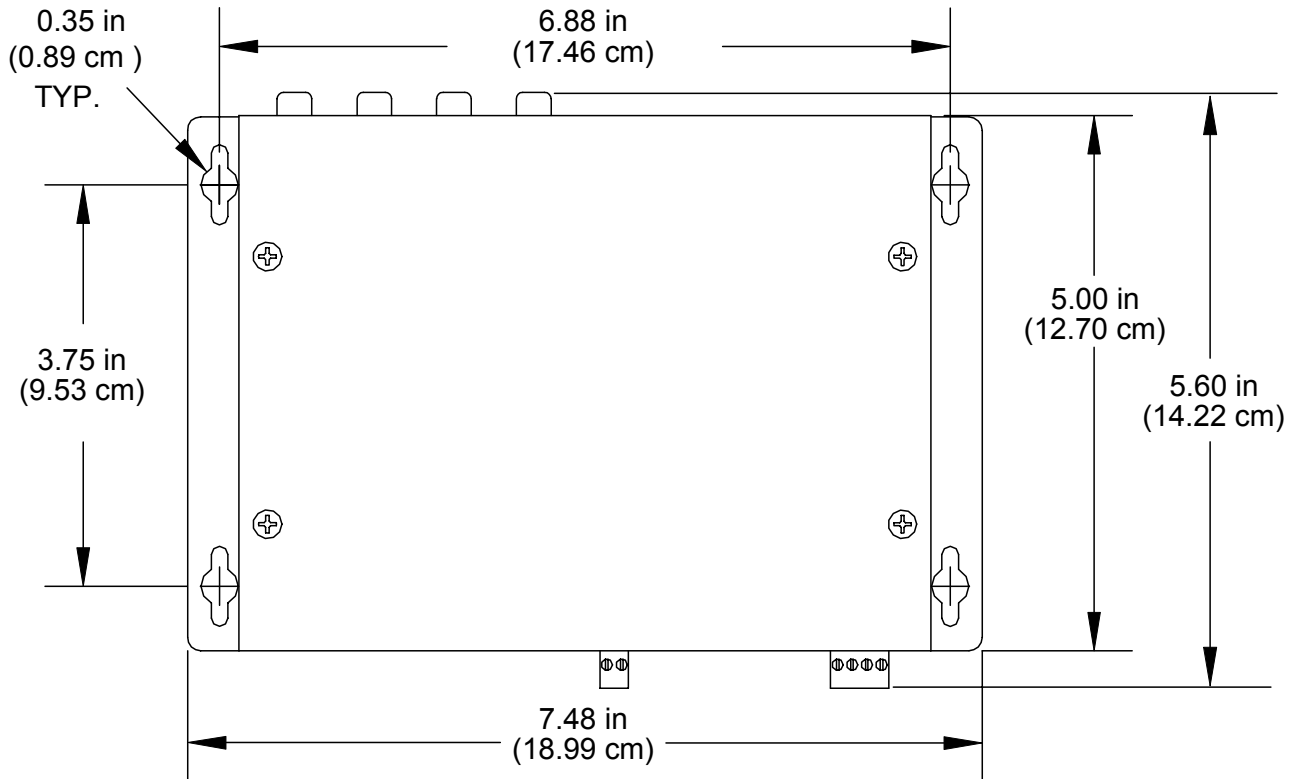


CNXRMC Rear View

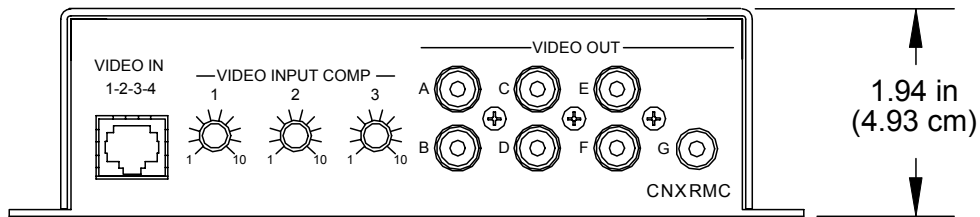


CNXRMC Physical Views

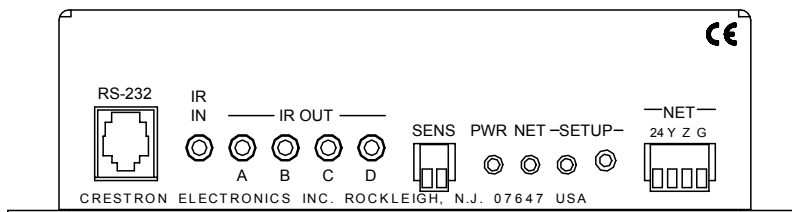
Top View



Front View



Rear View



Input and Output Ports

Connections to the CNXRMC are made through the ports on the front and rear panels. Refer to the illustrations on the previous page and the descriptions that follow.

VIDEO IN 1-2-3-4

The RJ-45 **VIDEO IN** port connects to a video distribution box such as the CNX-PVID8 and accepts four baseband/balanced video signals corresponding to each of the four levels provided by the CNX-PVID8. This connection can distribute high definition component video and multi-channel digital audio, or combinations of S-video and/or composite video. Three of the video signals have cable length compensation. The fourth video signal has fixed compensation and can be used for composite video or digital audio distribution. Refer to the signal routing diagram on page 10 for pin configurations.

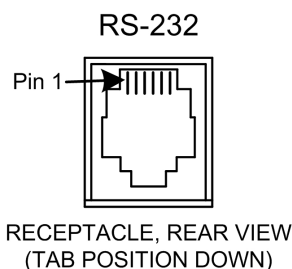
Each local video source input has a built-in video sensor.

VIDEO OUT (A – G)

These seven RCA connectors provide local (analog) video outputs. Refer to “Audio/Video Signal Routing” on page 9 for configuration suggestions.

RS-232

The CNXRMC provides one RJ-11 connector for RS-232 communication with serial devices. This port supports baud rates of up to 115K and RTS/CTS hardware handshaking. The pins are configured as shown in the following table:



Pin	Function
1	CTS (Clear to Send)
2	GND
3	RXD (Receive)
4	TXD (Transmit)
5	RTS (Request to Send)
6	Not connected

IR IN / IR OUT

The CNXRMC provides one infrared (IR) input, which is a mini phone jack that can connect to a Crestron IR detector (CNXRMIRD) to detect fixed low frequency (38 KHz) IR formats generated by most universal remote control transmitters. This port supports RC5 IR control and some IR control codes from Sharp Electronics Corporation.

The four IR outputs (A – D) are used to control either IR or one-way serial devices, not both. These outputs can also be connected to optional Crestron equipment such as the STIRP, ST-MB, ST-SPL, SP-RY, and SP-SC.

SENS

The CNXRMC contains a contact closure type input accessed via this two-pin connector. The port can be connected to a Crestron current sensor (CNXRMCSC) or

any other device that provides contact closure to detect the power status of a high-power device such as a television.

NET

This four-pin connector is used to connect to other four-wire devices in the Cresnet system. This connector must be attached to power the unit and communicate with the control system.

LED Indicators

The CNXRMC provides three LED indicators. The **PWR** (Power) indicator goes on when the unit is supplied with 24 volts DC from the network. The **NET** indicator is typically on when the unit is polled on the network (some flashing may occur). The **NET** LED indicates that the current program has a network device defined at the same Net ID as the CNXRMC. (The **SETUP** indicator and button are reserved for a function that is to be available in the future.)

VIDEO INPUT COMP 1, 2, 3

The CNXRMC provides three potentiometers (pots) that can be adjusted to compensate for CAT5 cable run lengths. Refer to “Video Input Compensation” on page 8 for the adjustment procedure.

Industry Compliance

As of the date of manufacture, the CNXRMC has been tested and found to comply with specifications for CE marking and standards per EMC and Radiocommunications Compliance Labelling.



NOTE: This device complies with part 15 of the FCC rules. Operation is subject to the following two conditions: (1) these devices may not cause harmful interference, and (2) these devices must accept any interference received, including interference that may cause undesired operation.

Setup

Network Wiring

NOTE: When installing network wiring, refer to the latest revision of the wiring diagram(s) appropriate for your specific system configuration, available from the Downloads | Product Manuals | Wiring Diagrams section of the Crestron website (www.crestron.com).

When calculating the wire gauge for a particular network run, the length of the run and the power factor of each network unit to be connected must be taken into consideration. If network units are to be daisy-chained on the run, the power factor of each network unit to be daisy-chained must be added together to determine the power factor of the entire chain. The length of the run in feet and the power factor of the run should be used in the resistance equation on the next page to calculate the value on the right side of the equation.

Resistance Equation

$$R < \frac{40,000}{L \times PF}$$

Where: R = Resistance (refer to table below).
 L = Length of run (or chain) in feet.
 PF = Power factor of entire run (or chain).

The required wire gauge should be chosen such that the resistance value is less than the value calculated in the resistance equation. Refer to the table after this paragraph.

Wire Gauge Values

RESISTANCE (R)	WIRE GAUGE
4	16
6	18
10	20
15	22
13	Doubled CAT5
8.7	Tripled CAT5

NOTE: All network wiring must consist of two twisted-pairs. One twisted pair is the +24V conductor and the GND conductor and the other twisted pair is the Y conductor and the Z conductor.

NOTE: When daisy chaining network units, always twist the ends of the incoming wire and outgoing wire that share a pin on the network connector. After twisting the ends, tin the twisted connection with solder. Apply solder only to the ends of the twisted wires. Avoid tinning too far up or the tinned end becomes brittle and breaks. After tinning the twisted ends, insert the tinned connection into the network connector and tighten the retaining screw. Repeat the procedure for the other three network conductors.

Identity Code

Every equipment and user interface within the network requires a unique identity code (Net ID). These codes are two-digit hexadecimal numbers from 03 to FE. The Net ID of each unit must match an ID code specified in the SIMPL Windows program. Refer to “Setting the Net ID in Device Settings” on page 16 for details of the SIMPL Windows procedure.

Refer to the note on page 21 for a definition of Viewport.

The Net ID of the CNXRMC has been factory set to **43**. The Net IDs of multiple CNXRMCs in the same system must be unique. Net IDs are changed from a personal computer (PC) via the Crestron Viewport.

NOTE: For detailed information on establishing communication between the PC and control system, refer to “Communication Settings” on page 21. If communication cannot be established, refer to the “Troubleshooting Communications” section in the respective Operations Guide for the control system.

Complete the following steps to change the Net ID.

1. Ensure that the device requiring a Net ID change is the only unit connected to the control system.
2. Open the Crestron Viewport.

3. From the Viewport menu, select **Functions | Set Network ID**. The software checks the baud rate and then opens the "Set Network ID" window.
4. In the "Set Network ID" window, select the device requiring a Net ID change from the *Current Network Devices* text window.
5. Select the new Net ID for the device from the *Choose the new network ID for the selected device (Hex):* text box.
6. Click **Set ID** to initiate the change. This will display the "ID command has been sent" window.
7. In the "Command Complete" window, click **OK**.
8. In the *Current Network Devices* text window, verify the new Net ID code.
9. In the "Set Network ID" window, click **Close**.

NOTE: The new Net ID code may also be verified by selecting **Diagnostic | Report Network Devices** in the Viewport (alternately, select **F4**).

10. Repeat this procedure for each additional network device requiring a Net ID change.

Mounting

Two screw holes in each bottom flange accept #6 screws (not supplied). The CNXRMC can be mounted in any orientation. Mounting hole spacing dimensions are illustrated in "Physical Description" which begins on page 2.

Hardware Hookup

The CNXRMC is capable of tremendous flexibility in audio and video signal distribution. Refer to "Audio/Video Distribution" on page 9 for detailed information. Other than making the power connection (NET) last, complete the connections in any order.

NOTE: Refer to "Network Wiring" on page 6 when making connections to the port labeled NET.

Video Input Compensation

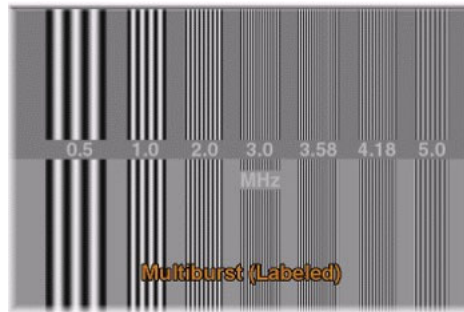
After the system is connected, it may be necessary to adjust the video input compensation pots on the CNXRMC to achieve the best picture on the monitor. This requires a narrow slotted screwdriver and an audio/video calibration DVD (or laser disc). Crestron recommends one of the following:

- Avia Guide to Home Theater, from Ovation Software (www.ovationsoft.com)
- Video Essentials, from DVD International (www.videoessentials.com).

To adjust the video input compensation:

1. Place the calibration disk in the system's DVD player.

2. Search the DVD for the chapter that displays the multi-burst pattern, as shown in the following illustration.



3. While the pattern is being displayed on the monitor, use the screwdriver to adjust the **VIDEO INPUT COMP 1** compensation pot until the line intensity on the monitor appears uniform. Note the numeric value.
4. Adjust the other two compensation pots (**VIDEO INPUT COMP 2 & 3**) to the same value as the **VIDEO INPUT COMP 1** compensation pot.

NOTE: For S-video and component video sources, be sure to adjust the pot for luminance compensation first (**VIDEO INPUT COMP 1**). The pots for chrominance compensation should be adjusted last.

Audio/Video Distribution

As previously stated, the CNXRMC receives video and digital audio from the Crestron CNX-PVID8 via CAT5 cabling. The unit's circuitry routes these inputs to local outputs; the individual outputs are enabled under program control.

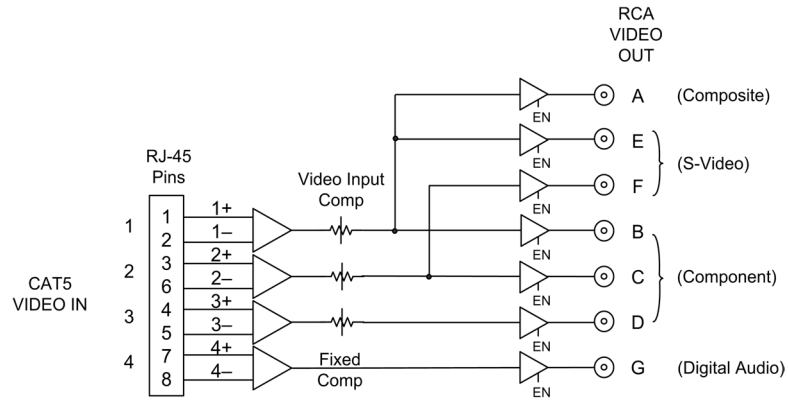
The following paragraphs describe signal distribution arrangements that are typical for the CNXRMC.

NOTE: For additional information on video connections over CAT5, refer to the latest version of the Crestron CAT5 Wiring Reference Guide (Doc. 6137) which is available from the Downloads | Product Manuals section of the Crestron website (www.crestron.com).

Audio/Video Signal Routing

Refer to the block diagram on the next page for additional details of the CNXRMC signal routing capabilities. The input designations (1 – 4) correspond to the output levels of the CNX-PVID8. Internal signal routing makes it possible for all video formats to be available without having to rearrange cable connections. Only one format is allowed at a time; output signals are enabled under program control.

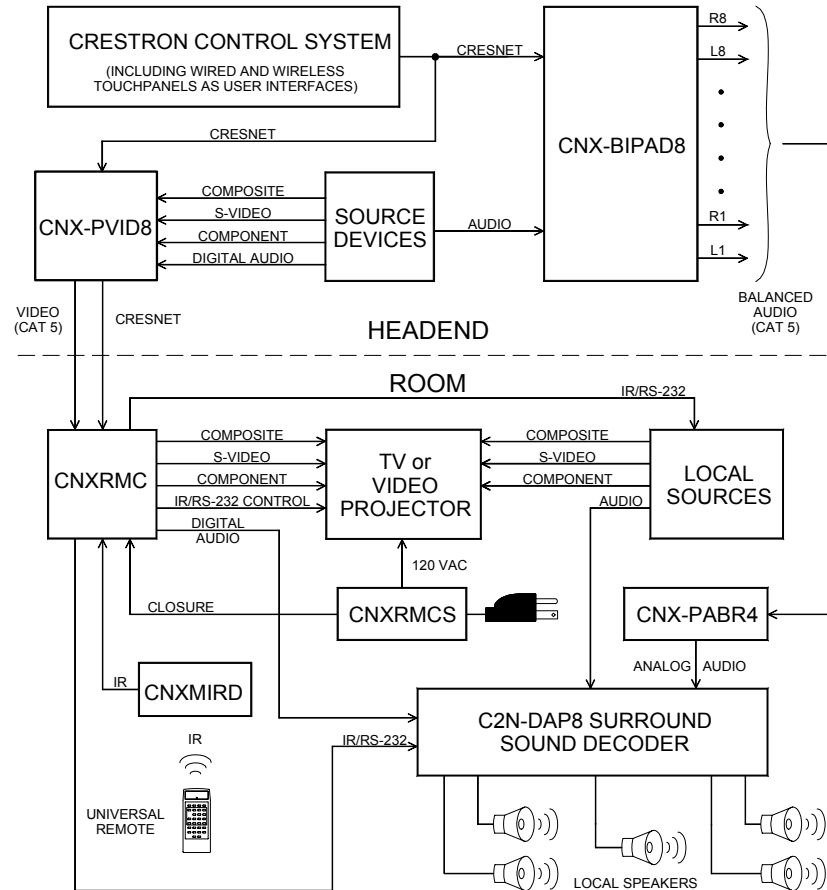
Audio/Video Signal Routing



Distribution of both Balanced and Digital Audio from the Headend

In this scenario, the BIPAD8 distributes balanced audio to the room via CAT5. In the room, a Crestron CNX-PBAR4 or third-party balanced-to-unbalanced transformer should be used to convert the balanced audio to an unbalanced output. Digital audio is made available in the room via the CNXRMC as described in the previous scenario.

Distribution of Balanced and Digital Audio from the Headend



Universal Remotes

Any universal remote transmitting RC5 code (and some Sharp codes) can communicate with the CNXRMC and allow the user to select and activate any function in the control system. An RC5 code is 14 bits long. Each code includes a 5-bit address (or system) and a 6-bit command. Sharp uses a different IR protocol, but some of their codes are acceptable.

NOTE: The Philips Pronto contains built-in RC5 commands for out-of-the-box use.

Setting up a Philips Pronto is easy!

If using the Philips Pronto, select RC5 code communication. For the Philips Pronto, the RC5 system number is equivalent to Crestron's *Transmitter ID* code, which is a unique identifier assigned to each transmitter. Likewise, RC5 command number is equivalent to Crestron's *Button ID*, which is synonymous with the join number used in SIMPL Windows. There is no need to perform the two multi-step procedures in the subsequent sections.

NOTE: Typically, codes used by Magnavox, Marantz, and Philips audio/video equipment utilize RC5 codes for transmission. Some codes used by Sharp Electronics Corporation are also usable.

Universal remotes require two multi-step procedures for setup.

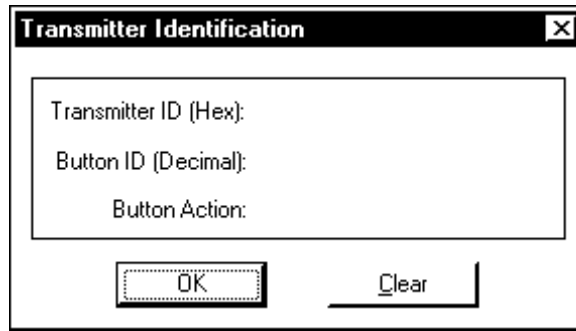
Some devices from Magnavox, Marantz, and Philips are designed to understand certain kinds of infrared signals sent by remote controls, specifically, signals belonging to the RC5 code set. Two procedures are required to setup a universal remote. The first procedure verifies that the universal remote chosen does transmit an identifiable code and therefore can communicate with the CNXRMC. The second procedure maps the buttons on the universal remote so that they can be used in the SIMPL Windows program.

Code Verification

Each universal remote comes with its own manual, which lists codes by device and manufacturer. The purpose of this procedure is to select and program a code into the universal remote so that it can communicate with the CNXRMC. All that is required to complete this procedure is the CNXRMC, a Crestron CNXRMC, a PC running the Crestron Viewport, a Crestron control system connected to the PC, and any universal remote (complete with batteries and manufacturer's manual). The control system should be running a valid SIMPL Windows program that includes the CNXRMC at the proper Net ID so that the CNXRMC can be polled, and a CNXRMC. (For details on including the CNXRMC in the program, refer to "Slot 2: IR Receiver" on page 18.)

Refer to the note on page 21 for a definition of Viewport.

1. Attach the CNXRMC to the CNXRMC (IR IN port).
2. Using Cresnet cable, attach the Crestron control system to the CNXRMC (NET port). Refer to "Network Wiring" on page 6 for details.
3. Open the Crestron Viewport.
Either launch the stand-alone version of Viewport, or start SIMPL Windows and from the menu bar, select **Tools | Viewport**.
4. From the Viewport menu, select **Diagnostic | Identify Transmitter ID**. The software checks the baud rate and then opens the "Transmitter Identification" window, as shown after this step.

"Transmitter Identification" Window

5. Point the universal remote at the CNXRMC and program the remote with an RC5 code (some Sharp codes are acceptable as well) as outlined in the manufacturer's manual.

NOTE: Crestron recommends that codes from manufacturers other than the manufacturer of the device being controlled be used to avoid IR transmission conflict. For example, if the controlled device is a Sony DVD player, an acceptable code from any manufacturer (except Sony) should be used to communicate with the Sony DVD player via the CNXRMC.

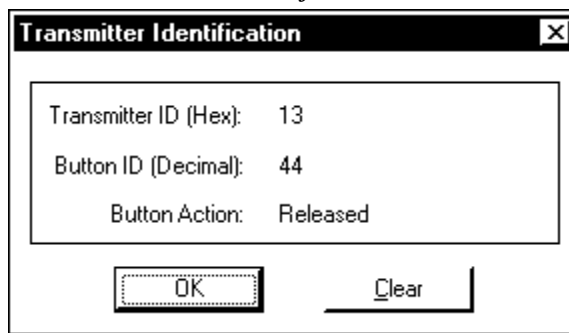
6. Select one or more function buttons on the remote and observe the "Transmitter Identification" window on the PC.
 - a) If there is no activity while pressing buttons on the remote, the code chosen was not an acceptable code. Repeat steps 5 and 6 with another code.
 - b) If activity is observed with each button press, the code used was an acceptable code and the CNXRMC can accept commands from the universal remote.

Map the Universal Remote

Once communication between the CNXRMC and the universal remote is achieved, it is necessary to understand what commands are transmitted and to which devices. Crestron distinguishes each device with a unique hexadecimal number known as the *Transmitter ID* that can range from 00 to 3F. Actually, RC5 codes display these IDs in the range of 00 to 1F and Sharp codes of suitable format display *Transmitter ID* codes in the range of 20 to 3F. *Transmitter ID* codes are revealed in the "Transmitter Identification" window.

Each universal remote has a number of source selection buttons on it (i.e., TV, VCR, DVD, AUX). Typically, those buttons are used when setting up the remote with an acceptable code (refer to "Code Verification" on page 11). If an acceptable code is transmitted during that procedure, Crestron assigns the code with an identifier in the "Transmitter Identification" window. For example, in the window shown on the next page, the *Transmitter ID (Hex):* field shows the number 13. Since the identifier falls in the range of 00 to 1F, the device communicates using an acceptable RC5 code.

Positive Transmitter Identification



The next logical question is, "What is the *Button ID*?" The purpose of this next procedure is to map the buttons on the universal remote so that a list can be generated and used for reference when creating the SIMPL Windows program. A decimal identification number (or *Button ID (Decimal)* as shown in the "Transmitter Identification" window) corresponds to each physical press on the universal remote. This procedure picks up where the code verification procedure left off.

1. Complete steps 1 through 6 in "Code Verification" on page 11.
2. Wherever convenient (i.e., Notepad on the PC or a piece of scrap paper) create a table for recording the *Button ID (Decimal)* number associated with each button press on the universal remote. "Appendix: Mapping Table" on page 29 contains a table to record this information. Create as many copies of the table as necessary.
3. Click the **Clear** button in the "Transmitter Identification" window to reset the setup.
4. Press a single button on the universal remote and observe the "Transmitter Identification" window.
5. Record the button title and ID for the action in step 4.
6. Repeat steps 4 and 5 for each button that is to be mapped. Refer to the sample after this step.

Sample of Completed Mapping Table

PHYSICAL DEVICE BEING CONTROLLED: DVD
 TRANSMITTER ID (HEX): 20

BUTTON TITLE ON UNIVERSAL REMOTE	BUTTON ID (DECIMAL)
<i>power</i>	13
<i>play</i>	54
<i>stop</i>	55
<i>f. fwd</i>	53
<i>rew</i>	51

7. Repeat this entire procedure (steps 2 through 6) for each source selection button on the universal remote that requires programming.

Programming Software

NOTE: Have a question or comment about Crestron software?

Answers to frequently asked questions (FAQs) can be viewed in the Online Help section of the Crestron website (www.crestron.com). To post your own question or view questions you have submitted to Crestron's True Blue Support, log in at <http://www.crestron.com/accounts/login.asp>. First-time users will need to establish a user account.

Setup is easy thanks to Crestron's Windows®-based programming software. The Crestron Application Builder™ (Appbuilder) creates a complete project, with no special programming required. Crestron Appbuilder completes all necessary programming for a base system including all touchpanel screens and the control system program. Once Crestron Appbuilder creates the project, the system interfaces and program logic can be customized. It can easily be modified with Crestron development tools (i.e., SIMPL Windows and VT Pro-e software packages).

The program output of Crestron Appbuilder is a SIMPL Windows program with much of the functionality encapsulated in macros. Therefore, extending the capabilities of the system is very easy. Crestron AppBuilder and SIMPL Windows are intended for users with different levels of programming knowledge. Crestron AppBuilder is easier to use for the beginning programmer, and much faster for all programmers. However, it does not allow the degree of control and flexibility that SIMPL Windows does. Of course, one can initiate programming using the easiest method (Crestron AppBuilder) and use advanced techniques that are available from SIMPL Windows to customize the job.

Crestron Appbuilder comes with templates for all supported interfaces. If a user wishes to create a touchpanel project using templates with a different look-and-feel this can be accomplished by making a custom template. This custom template can then be used by Crestron Appbuilder to create the final project files to be loaded into the panels. Alternatively, VT Pro-e can be used to tweak projects created with the Crestron AppBuilder or develop original touchpanel screen designs.

NOTE: Crestron recommends that you use the latest software to take advantage of the most recently released features. The latest software is available from the Downloads | Software Updates section of the Crestron website (www.crestron.com).

The following are the earliest useable software version requirements for the PC:

- SIMPL Windows version 2.03.12, with Library Update 190 or later. (Also requires SIMPL+ Cross Compiler).
- Crestron Database version 15.8.5 or later for use with SIMPL Windows.
- (Optional) Crestron Application Builder version 1.2 or later.

Programming with Crestron AppBuilder

Crestron AppBuilder offers automatic programming for such residential and commercial applications as audio distribution, home theater, and video conferencing. The interface of this tool guides you through a few basic steps for designating rooms and specifying the control system, touchpanels, devices, and functionality. Crestron AppBuilder then programs the system, including all touchpanel projects and control system logic.

The easiest method of programming, but does not offer as much flexibility as SIMPL Windows.

Crestron AppBuilder is fully integrated with Crestron's suite of software development tools, including SIMPL Windows, VT Pro-e, and the Crestron Database. Crestron AppBuilder accesses these tools behind the scenes, enabling you to easily create robust systems.

Programming with SIMPL Windows

NOTE: The following are acceptable file extensions for programs that include a CNXPMC, developed for specific control system types:

- .smw *projectname.smw* (source file)
- .spz *projectname.spz* (compiled file for 2-series)
- .bin *projectname.bin* (compiled file for CNX generation)
- .csz *projectname.csz* (compiled file for CNX generation with SIMPL+)
- .ush *projectname.ush* (compiled file for CNX generation with SIMPL+ header file)
- .usp *projectname.usp* (source code module for SIMPL+)
- .umc *projectname.umc* (user macro file)

NOTE: The following assumes that the reader has knowledge of SIMPL Windows. If not, refer to the extensive help information provided with the software.

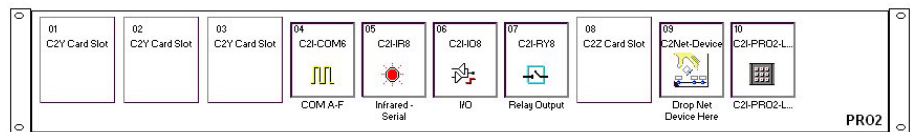
NOTE: In the following description, the PRO2 control system is used.

SIMPL Windows is Crestron's primary software for programming Crestron control systems. It provides a well-designed graphical environment with a number of workspaces (i.e., windows) in which a programmer can select, configure, program, test, and monitor a Crestron control system. SIMPL Windows offers drag and drop functionality in a familiar Windows® environment.

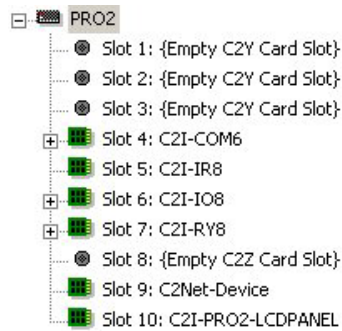
This section describes a sample SIMPL Windows program that includes a CNXPMC.

Configuration Manager is where programmers “build” a Crestron control system by selecting hardware from the *Device Library*. In Configuration Manager, drag the PRO2 from the Control Systems folder of the *Device Library* and drop it in the upper pane of the *System Views*. The PRO2 with its associated communication ports is displayed in the *System Views* upper pane.

PRO2 System View

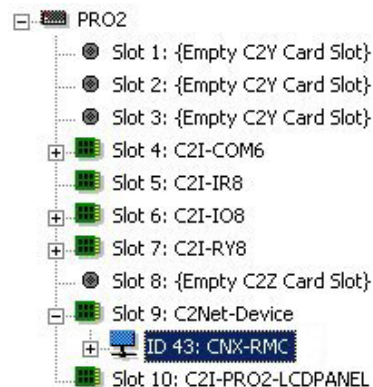


The *System Views* lower pane displays the PRO2 system tree (refer to graphic on the next page). This tree can be expanded to display and configure the communications ports.

Expanded PRO2 System Tree**C2Net-Device Slot in Configuration Manager**

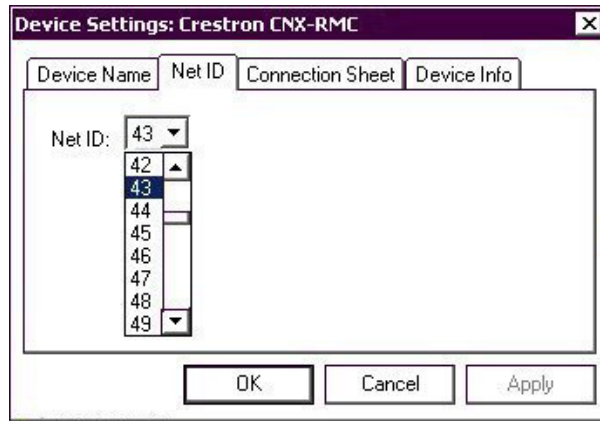
To incorporate a CNXRMC into the system, drag the CNXRMC from the Cresnet Control Modules | Cresnet Video Modules folder of the *Device Library* and drop it in *System Views*. The PRO2 system tree displays the unit in Slot 9, with a default Net ID of 43 as shown in the following illustration.

NOTE: The first CNXRMC in a system is preset with a Net ID of 43, when its symbol is dragged into the upper pane of *System Views*. Additional CNXRMCs are automatically assigned different Net ID numbers as they are added.

C2Net Device, Slot 9**Setting the Net ID in Device Settings**

Double-click the CNXRMC icon to open the “Device Settings” window. This window displays the CNXRMC device information. If necessary, select the *Net ID* tab to change the unit’s Net ID, as shown in the figure on the next page.

CNXRMC “Device Settings” Window



NOTE: SIMPL Windows automatically changes Net ID values of a device added to a program if a duplicate device or a device with the same default Net ID already exists in the program. Always ensure that the hardware and software settings of the Net ID match. For Net ID hardware setting details, refer to “Identity Code” on page 7.

CNXRMC Symbol

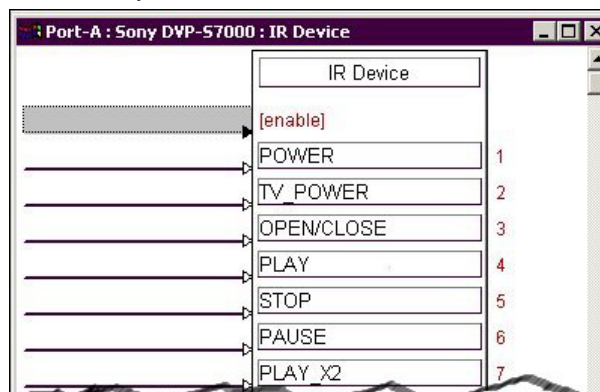
Due to the extensive functionality of the CNXRMC, a single CNXRMC symbol in SIMPL Windows would be too complex. Instead, the CNXRMC is broken up into slots. In Program Manager, expand the CNXRMC to view the individual slots and drag the desired symbol to *Detail View*. The slots and corresponding symbols are described in subsequent sections.

Slot 1: Built-in 4 Port IR Card

This slot can contain up to four IR devices, selected from the Crestron or User IR Databases. The actual symbols associated with this slot vary depending on the devices in the system. As a sample, the illustration after this paragraph is for a system that contains a Sony DVD player (model DVD-S7000). Typical of all IR devices, it has a number of inputs to control its many functions. These inputs are driven by a user interface (i.e., touchpanel or third party acceptable transmitter).

NOTE: Only one of the four IR ports can transmit IR codes at any given time.

IR Device Symbol



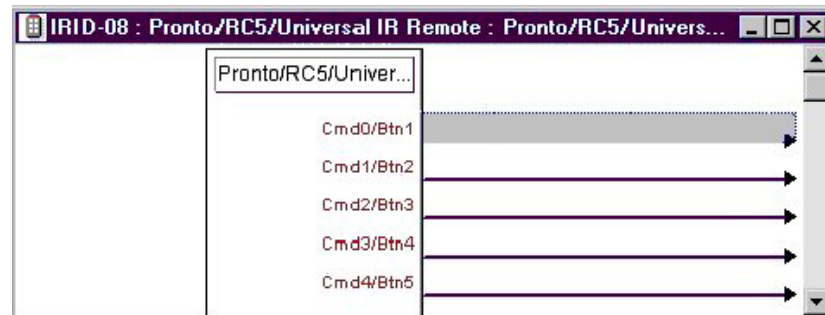
Slot 2: IR Receiver

This symbol is only used in systems containing an acceptable third party transmitter (Pronto/RC5/Universal IR Remote). To include a compatible third party transmitter as part of the program, you must first drop a wireless receiver (CNXRMIRD) from the Wireless Receivers | Wireless Receivers (IR) folder of the *Device Library* into slot 2. Then, from the Wireless Remotes (IR) folder, drop the Pronto/RC5/Universal IR Remote symbol onto the CNXRMIRD.

NOTE: You must use a Crestron IR receiver. Third party receivers are not supported or compatible.

The symbol, shown below, consists of a number of outputs (presses), which correspond to the actual buttons on the transmitter. Recall that when mapping the buttons on the third party transmitter, a list was developed (refer to "Map the Universal Remote" on page 12 for the actual procedure). That list needs to be transcribed to this symbol. Match the button ID numbers from the list to the numbered press. These outputs are the driving source for the IR devices.

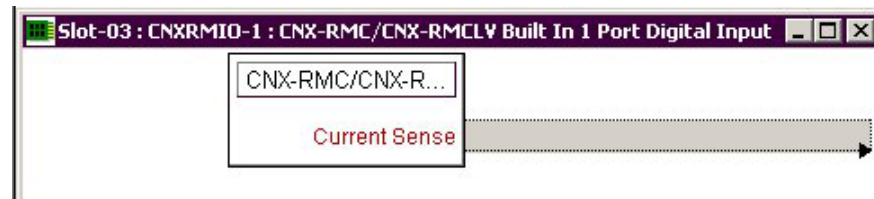
Pronto/RC5/Universal Remote Symbol



Slot 3: Built-in 1 Port Digital Input

This symbol is only used to determine whether the monitor (i.e., television set) in the room is on or off. A Crestron Room Current Sensor (CNXRMCS) or any other device that provides dry contact closure (no voltage) attaches to the two-pin port (labeled SENS). The monitor plugs into the CNXRMCS. The symbol for this port, shown after this paragraph, consists of a single output. When this **<Current Sense>** output is high, the monitor plugged into the CNXRMCS is on. A low output indicates that the monitor is off. This signal can be used as a feedback indicator when connected to the user interface (i.e., touchpanel).

Digital Input Symbol

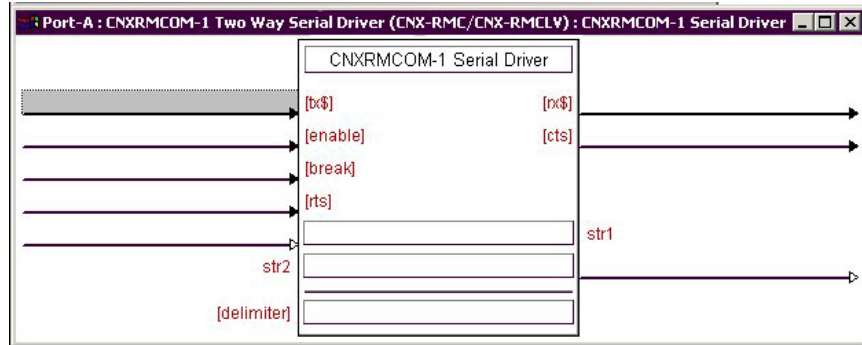


Slot 4: Built-in RS-232 Port

This port serves two purposes: an RS-232 port for two-way communication with serial devices, and a console port for upgrading firmware. (Refer to "Firmware Upgrade" on page 24.)

The symbol shown following this paragraph is only used when the CNXRMC communicates with a serial device. The bidirectional port supports baud rates up to 115K baud N81 and has RTS/CTS handshake signals. The tables below list the inputs/outputs and their functional description. Inputs and outputs surrounded by brackets ([...]) are optional.

Two-Way Serial Driver Symbol



Built-in RS-232 Symbol Input Descriptions

INPUT(S)	FUNCTION(S)
[tx\$]	More advanced signal processing can be done through serial strings and the tx\$ input line on the symbol.
[enable]	If signal is present on this input, it must be high to permit activity of the the symbol. If the signal is low, the symbol is disabled.
[break]	Some devices use a break character before sending out any serial data. Break characters are sent out the port separated by the specified pace parameter.
[rts]	RTS is an output from the program to the CNXRMC RS-232 port when the state of the RTS line is set.
str1	The CNXRMC RS-232 port is capable of receiving complex serial data in the form of serial data strings on this input line.

Built-in RS-232 Symbol Output Descriptions

OUTPUT(S)	FUNCTION(S)
[rx\$]	More advanced signal processing can be done through serial strings and the rx\$ output line on the symbol.
[cts]	CTS is an input to the program that monitors the "Clear to Send" line status of the CNXRMC RS-232 port.
str2	The CNXRMC RS-232 port is capable of sending complex serial data in the form of serial data strings on this output line.

NOTE: When present, the delimiter is appended to every string of text in the port definition (both transmitted and received strings).

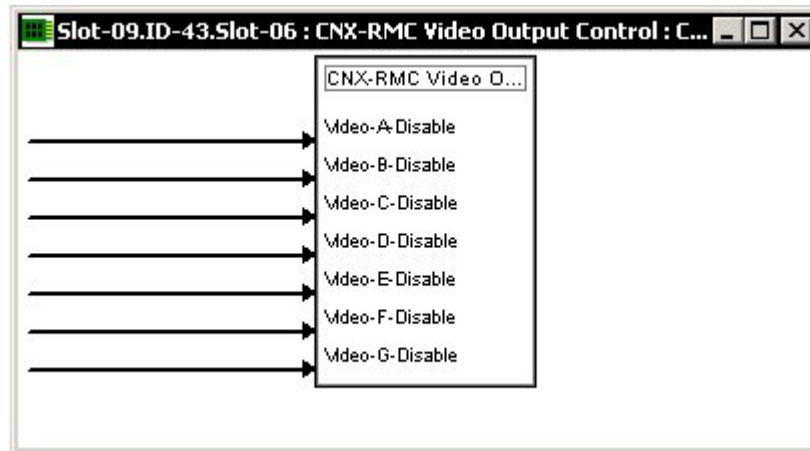
Slot 6: Video Output Control

The CNXRMC’s built-in Video Output Control module allows the programmer to disable and thus control the seven ports, VIDEO OUT (A – G), via the SIMPL Windows program. The symbol for this module is shown on the next page. The ports on the CNXRMC are by default enabled (refer to the signal routing diagram on page 10 for details).

When the input is high, the port is disabled. These inputs can be driven by a user interface.

NOTE: The default state of the symbol inputs is low so that video signals pass through the CNXRMC upon power up.

Video Output Control Module



CNXRMC Module

Modules are self-contained SIMPL Windows programs that look like symbols and can be dropped into larger programs to control a device or perform a function. Modules are located in the Crestron Modules folder in Program Manager. Each module is unique for a given product.

The CNXRMC module monitors signals in the program to determine which video format is being selected. It also defines whether digital audio is preferred. Furthermore, the module enables/disables the appropriate output buffer in the CNXRMC. If the monitor in the room accepts multiple video formats, the CNXRMC module is capable of pulsing the monitor so that it displays the appropriate format.

NOTE: For the latest description of the module, highlight the module in SIMPL Windows and press **F1**.

Example Program

An example program for the CNXRMC is available from the Crestron FTP site [Crestron FTP site \(ftp://ftp.crestron.com/Examples\)](ftp://ftp.crestron.com/Examples). Select the Examples folder and search for CNXRMC.ZIP that contains the example program, associated files and a README.TXT file that describes the program.

Uploading and Upgrading

Assuming a PC is properly connected to the entire system, Crestron programming software allows the programmer to upload programs and projects to the control system and touchpanel after their development. However, there are times when the files for the program and projects are compiled and not uploaded. Instead, compiled files may be distributed from programmers to installers, from Crestron to dealers, etc. Even firmware upgrades are available from the Crestron website as new features are developed after product releases. In those instances, one has the option to upload via the programming software or to upload and upgrade via the Crestron Viewport.

NOTE: The Viewport utility accomplishes multiple system tasks, primarily via an RS-232 or TCP/IP connection between the control system and a PC. It is used to observe system processes, upload new operating systems and firmware, change system and network parameters, and communicate with network device consoles and touchpanels, among many other tasks. Viewport can also function as a terminal emulator for generic file transfer. All of these functions are accessed through the commands and options in the Viewport menus. Therefore, for its effectiveness as a support and diagnostic tool, the Crestron Viewport may be preferred over development tools when uploading programs and projects.

The following sections define how one would upload a SIMPL Windows program or upgrade the firmware of the CNXRMC. However, before attempting to upload or upgrade, it is necessary to establish communications.

Communication Settings

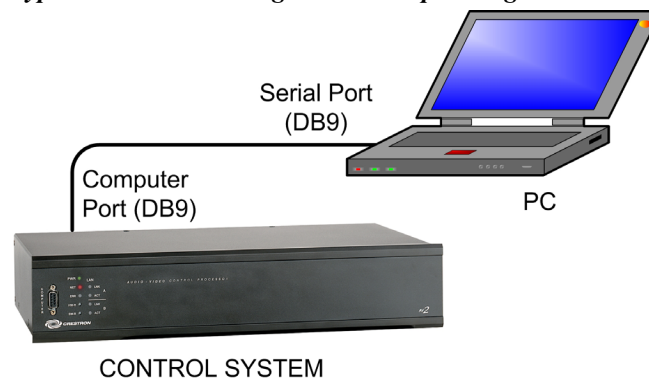
NOTE: For laptops and other PCs without a built-in RS-232 port, Crestron recommends the use of PCMCIA cards, rather than USB-to-serial adapters. If a USB-to-serial adapter must be used, Crestron has tested the following devices with good results:

Belkin (large model) F5U103
 I/O Gear GUC232A
 Keyspan USA-19QW

Other models, even from the same manufacturer, may not yield the same results.

The procedure in this section provides details for RS-232 communication between the PC and the control system. If TCP/IP communication is preferred, consult the latest version of the Crestron e-Control Reference Guide (Doc. 6052) or the respective Operations Guide for the control system. These documents are available from the Downloads | Product Manuals section of the Crestron website (www.crestron.com). Refer to the figure below for a typical connection diagram when uploading files.

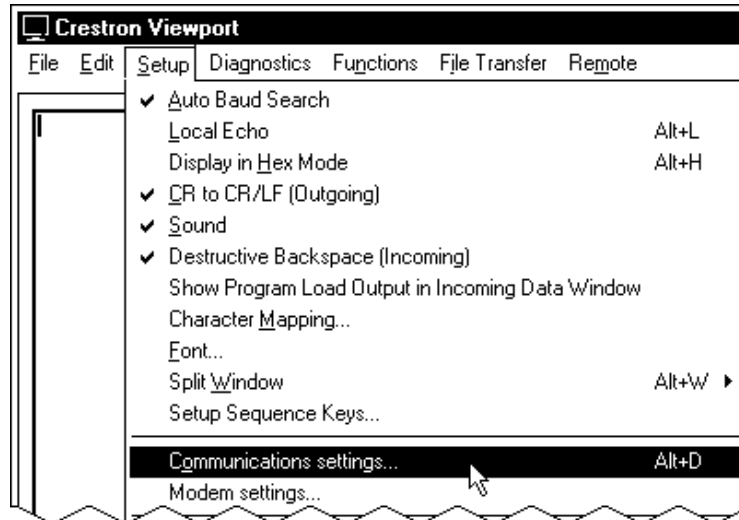
Typical Connection Diagram when Uploading Files



1. Open the Crestron Viewport.
 Either launch the stand-alone version of Viewport, or start SIMPL Windows and from the menu bar, select **Tools | Viewport**.

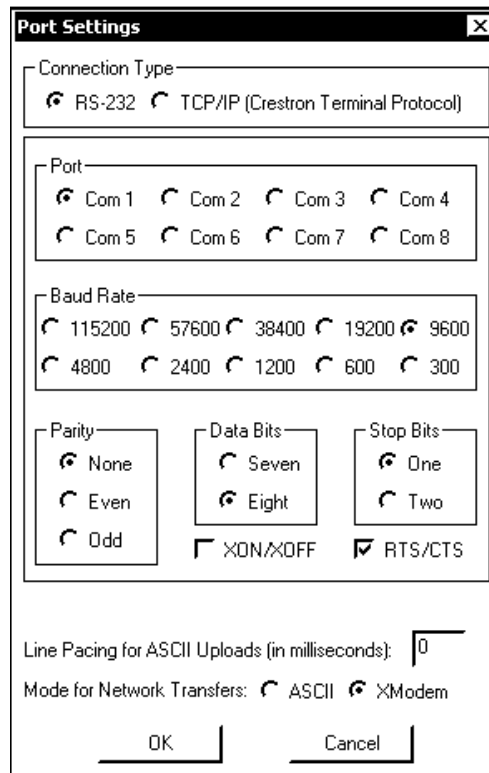
2. Refer to the figure after this step. From the Viewport menu, select **Setup | Communications settings** (alternatively, press **Alt+D**) to open the “Port Settings” window.

Setup | Communications Settings Command



3. Select **RS-232** as the connection type. Verify that an available COM port (COM 1 is shown after this step) is selected, and that all communication parameters (9600, N, 8, 1) and necessary options from the “Port Settings” window are selected as shown after this step. Click the **OK** button to save the settings and close the window.

“Port Settings” Window



- After setting the baud rate, cycle power to the RMC while continuing to send a break command (Alt+K) until the screen display is similar to the following.

Device Configuration Information

```

Version 5.13.19-r 07/08/2003
1:95 CNXRMIR-4 4 Port IR Generator
2:96 CNXRMIRD IR Receiver
3:97 CNXRMIO-1 g.p. i/o
4:98 CNXRMCOM-1 RS-232 Interface
6:99 CNXRM-U video crosspoint
7:9A CNXRM-A Audio controls

Initializing logic

SIMPL+ version 5.13.00, 06/05/03

Program size: 00040
Digital signals: 0001
Analog signals: 0000
Data allocated: 0003
Index table size: 0018 0012
Initialization complete
8000

Version 5.13.19-r 07/08/2003

```

A control system source file has the extension .smw. A compiled SIMPL Windows file has the extension .spz for a 2-Series control system, .bin for CNX generation, and .csz for CNX generation with SIMPL+.

Uploading a SIMPL Windows Program

The SIMPL Windows file can be uploaded to the control system using SIMPL Windows or via the Crestron Viewport.

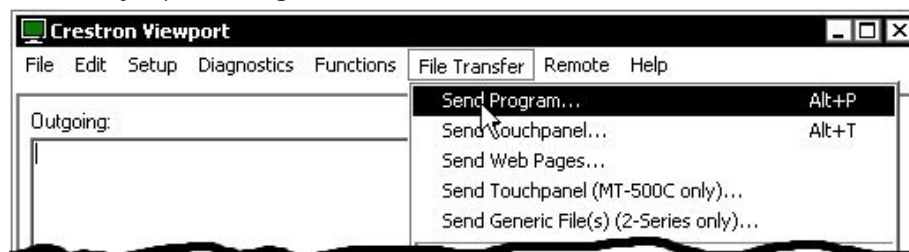
Upload via SIMPL Windows

- Start SIMPL Windows.
- Select **File | Open** to view the “Open” window, navigate to the SIMPL Window file (.smw), and click **Open**.
- Select **Project | Transfer Program**.

Upload via Crestron Viewport

- Verify that the procedure for “Communication Settings” that begins on page 21 has been performed.
- As shown after this step, select **File Transfer | Send Program** (alternatively, press **Alt+P**) from the Viewport menu.

File Transfer | Send Program Command



- The “Send Program” window appears, as shown on the next page. Click **Browse**, locate the compiled file (.spz) and click **Open**. This will display the program's header information and enable one or both of the *What to Send* check boxes. If the program does not contain any SIMPL+ modules, only the *SIMPL Program* check box will be enabled.

If it does contain SIMPL+ modules, then the *SIMPL+ Program(s)* check box will also be enabled. Select one or both check boxes and then click **Send Program** to begin the transfer.

NOTE: Refer to the respective Operations Guide for the control system for details about the other fields shown on the “Send Program” window.

“Send Program” Window

- To verify that the program has been transferred successfully, select **Diagnostics | Report Program Information**. This should display a window that provides details about the current program loaded into the control system.

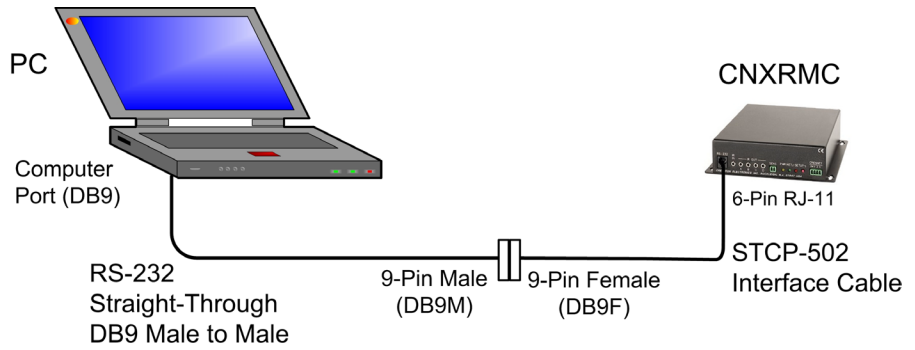
Firmware Upgrade

A firmware upgrade file has the extension upz.

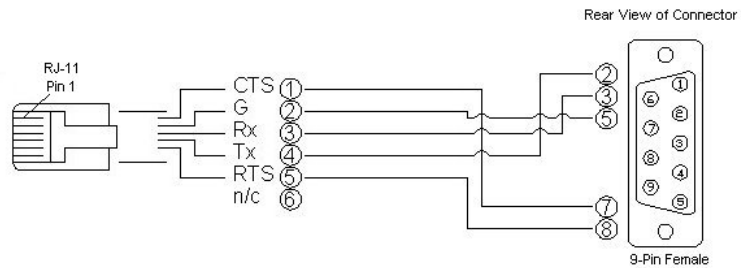
To take advantage of all the CNXRMC features, it is important that the unit contains the latest firmware available. Therefore, please check the Crestron website (http://www.crestron.com/downloads/software_updates.asp) for the latest version of firmware. Not every product has a firmware upgrade, but as Crestron improves functions, adds new features, and extends the capabilities of its products, firmware upgrades are posted. To upgrade the firmware, complete the following steps.

Refer to the figures on the next page for a typical connection diagram when upgrading firmware and a wiring diagram for the STCP-502 interface cable that connects to the CNXRMC.

Typical Connection Diagram when Upgrading Firmware

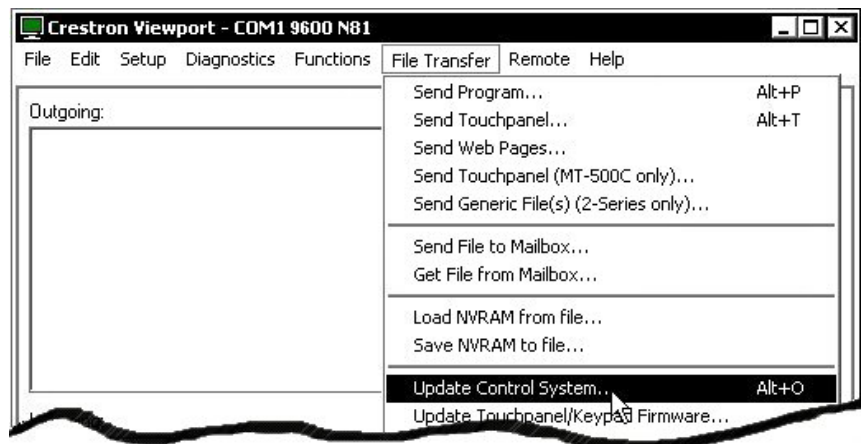


STCP-502 Interface Cable Wiring Diagram



1. Apply power to the CNXRMC either via Cresnet, with no control system on the network, or directly via a Crestron power supply.
2. Establish communication between the PC and the CNXRMC by performing steps 1 through 3 of the procedures given in “Communication Settings” which begins on page 21.
3. As shown after this step, select **File Transfer | Update Control System** from the Viewport menu.

File Transfer | Update Control System Command



4. To upload new firmware, select the file with the “t” suffix (e.g., “51263t.upz”) as shown in the illustration on the next page.

“Update Control System” Window

Update Control System

Control System Update (UPZ) Version
 Current: 05.12.63 Selected: 5.12.66-t

Operating System Version
 Current: 5.12.63-t Selected: 5.12.66-t

Monitor Version
 Current: 5.12.63 Selected: 5.12.63-t

TCP/IP Stack Version
 Current: **Not Running** Selected: **UNKNOWN**

Selected File:
 C:\QA-Test\Control Systems\UPZ\51266t.upz Browse...

What to Send
 Operating System Monitor TCP/IP Stack

Send Cancel

5. Make sure the *Operating System* and *Monitor* boxes are selected, and click on **Send** to begin the transfer. The following warning message will appear. Select **Yes** to continue the transfer.

Continue with transfer?

By updating your Control System to the selected components, the current SIMPL program and any SIMPL+ modules in the control system will be cleared and will need to be reloaded after the upgrade is complete.

Would you like to continue with the transfer?

Yes No

NOTE: The CNXRMC does not have any SIMPL or SIMPL+ modules. Selecting **Yes** will not affect the program or the device.

Problem Solving

Troubleshooting

The table below provides corrective action for possible trouble situations. If further assistance is required, please contact a Crestron customer service representative.

CNXRMC Troubleshooting

TROUBLE	POSSIBLE CAUSE(S)	CORRECTIVE ACTION
CNXRMC does not function.	Incorrect power supply.	Use a Crestron power supply with at least 6 watts of available power.
PWR LED does not illuminate.	CNXRMC is not receiving power.	Verify that cable plugged into NET port is secure.
NET LED does not illuminate.	Improper Net ID.	Verify that CNXRMC Net ID matches Net ID in the software program. Refer to "Identity Code" in this Operations Guide.
	Loose network connection.	Verify that cable plugged into NET port is secure.
There is no response from commands sent to CNXRMC.	Universal remote is not communicating with CNXRMC.	Verify that the universal remote has been properly mapped and the commands are properly identified in the SIMPL Windows program.
		Verify that the CNXRMIIRD is properly connected to the IR IN port on the CNXRMC.
	Improper placement or connection of the IR probes.	Verify that the IR probe is properly connected to one of the IR OUT ports on the CNXRMC. Review the IR probe manual and make sure that it is properly placed on or near the the IR window of the equipment.
Unexpected display on video monitor.	Improper connections to the VIDEO OUT ports on the CNXRMC.	Review the combination of acceptable video formats delivered via the VIDEO OUT ports on the CNXRMC. Refer to "Hardware Hookup" in this Operations Guide.
	The CNXRMC Video Output Control symbol has been improperly set.	Review the description for slot 6 in the "Programming with SIMPL Windows" section of this Operations Guide. Then adjust the SIMPL Windows program accordingly.
	Improper Video Input Compensation Adjustment.	Review the Video Input Compensation procedures which begin on page 9 in this Operations Guide.
Unit not reporting on Cresnet. No RS-232 output.	CNXRMC in firmware upload mode.	Reboot CNXRMC.

Further Inquiries

If you cannot locate specific information or have questions after reviewing this guide, please take advantage of Crestron's award winning customer service team by calling the Crestron corporate headquarters at 1-888-CRESTRON [1-888-273-7876]. For assistance in your local time zone, refer to the Crestron website (www.crestron.com) for a listing of Crestron worldwide offices.

You can also log onto the online help section of the Crestron website to ask questions about Crestron products. First-time users will need to establish a user account to fully benefit from all available features.

Future Updates

As Crestron improves functions, adds new features, and extends the capabilities of the CNXRMC, additional information may be made available as manual updates. These updates are solely electronic and serve as intermediary supplements prior to the release of a complete technical documentation revision.

Check the Crestron website periodically for manual update availability and its relevance. Updates are identified as an “Addendum” in the Download column.

Return and Warranty Policies

Merchandise Returns / Repair Service

1. No merchandise may be returned for credit, exchange, or service without prior authorization from CRESTRON. To obtain warranty service for CRESTRON products, contact the factory and request an RMA (Return Merchandise Authorization) number. Enclose a note specifying the nature of the problem, name and phone number of contact person, RMA number, and return address.
2. Products may be returned for credit, exchange, or service with a CRESTRON Return Merchandise Authorization (RMA) number. Authorized returns must be shipped freight prepaid to CRESTRON, 6 Volvo Drive, Rockleigh N.J., or its authorized subsidiaries, with RMA number clearly marked on the outside of all cartons. Shipments arriving freight collect or without an RMA number shall be subject to refusal. CRESTRON reserves the right in its sole and absolute discretion to charge a 15% restocking fee, plus shipping costs, on any products returned with an RMA.
3. Return freight charges following repair of items under warranty shall be paid by CRESTRON, shipping by standard ground carrier. In the event repairs are found to be non-warranty, return freight costs shall be paid by the purchaser.

CRESTRON Limited Warranty

CRESTRON ELECTRONICS, Inc. warrants its products to be free from manufacturing defects in materials and workmanship under normal use for a period of three (3) years from the date of purchase from CRESTRON, with the following exceptions: disk drives and any other moving or rotating mechanical parts, pan/tilt heads and power supplies are covered for a period of one (1) year; touchscreen display and overlay components are covered for 90 days; batteries and incandescent lamps are not covered.

This warranty extends to products purchased directly from CRESTRON or an authorized CRESTRON dealer. Purchasers should inquire of the dealer regarding the nature and extent of the dealer's warranty, if any.

CRESTRON shall not be liable to honor the terms of this warranty if the product has been used in any application other than that for which it was intended, or if it has been subjected to misuse, accidental damage, modification, or improper installation procedures. Furthermore, this warranty does not cover any product that has had the serial number altered, defaced, or removed.

This warranty shall be the sole and exclusive remedy to the original purchaser. In no event shall CRESTRON be liable for incidental or consequential damages of any kind (property or economic damages inclusive) arising from the sale or use of this equipment. CRESTRON is not liable for any claim made by a third party or made by the purchaser for a third party.

CRESTRON shall, at its option, repair or replace any product found defective, without charge for parts or labor. Repaired or replaced equipment and parts supplied under this warranty shall be covered only by the unexpired portion of the warranty.

Except as expressly set forth in this warranty, CRESTRON makes no other warranties, expressed or implied, nor authorizes any other party to offer any warranty, including any implied warranties of merchantability or fitness for a particular purpose. Any implied warranties that may be imposed by law are limited to the terms of this limited warranty. This warranty statement supercedes all previous warranties.

Trademark Information

All brand names, product names, and trademarks are the sole property of their respective owners. Windows is a registered trademark of Microsoft Corporation. Windows95/98/Me/XP and WindowsNT/2000 are trademarks of Microsoft Corporation.

This page intentionally left blank.



Crestron Electronics, Inc.
15 Volvo Drive Rockleigh, NJ 07647
Tel: 888.CRESTRON
Fax: 201.767.7576
www.crestron.com

Operations Guide – DOC. 8162A
10.03

Specifications subject to
change without notice.